

SysInfoTools EML Converter

Table of Contents

1. SysInfotools EML Converter	2
2. Overview	2
3. Getting Started	3
Installation procedure	4
4. Order and Activation	4
How to Order	4
How to Activate	4
5. Using SysInfoTools EML Converter	5
Understanding the User Interface	6
Button Used	6
How to use EML Converter Tool	7
6. Uninstall the Software	13
7. Legal Notice	14
Copyright	14
Disclaimer	14
Trademarks	15
License Agreement	15
8. Technical Support	16
9. About SysInfoTools	16

1. SysInfotools EML Converter



2. Overview

SysInfo EML Converter is one of the smartest and advanced applications to migrate all your EML files into 15 different file formats like PDF, EMLX, MSG and MBOX, MHT, Gmail, Yahoo, Outlook, IMAP, Thunderbird, txt, Zimbra and so on. The software has been designed with an advanced conversion algorithm and with a simple and easy to understand interface. So that, even a novice user can also uses it without any technical assistance.

Key features of SysInfoTools EML Converter Tool are:

- Safely convert all your EML files into different other file formats.
- Convert your data without any data loss or data misalignment.
- Support conversion of bulk files.
- Support conversion of emails with all their attachments.
- Let users preview their data in their original hierarchy.
- Seamlessly convert your data into 15 different file formats.
- Let users to rename the imported files & data.
- Loaded with an easy to understand interface.
- Runs smoothly on all versions of Windows Operating System.

3. Getting Started

- [Installation Procedure](#)(See 3.1)
- [Order And Activation](#)(See 4.)

Installation procedure

To install **SysInfoTools EML Converter** Tool, follow the steps given below:

1. Download demo version of the software setup (executable file or .exe) from the page linked below:

<https://www.sysinfotools.com/eml-converter.php>

2. Double-click the setup to install the software on your system.
3. Follow the steps on the setup wizard to install the software on your system.
4. After a successful completion, the setup wizard will pop-up the message of setup completion on your monitor screen.
5. Now click **Finish** to launch the software on your system.

Note: Microsoft Outlook must be installed on your system in order to use **SysInfoTools EML Converter** Tool.

4. Order and Activation

- [How to Order](#)(See 4.1)
- [How to Activate](#)(See 4.2)

How to Order

The software can be purchased by making online payments. Click on the link shown below to have a look at the pricing details and to place an order.

<https://www.sysinfotools.com/buynow/eml-converter.php>

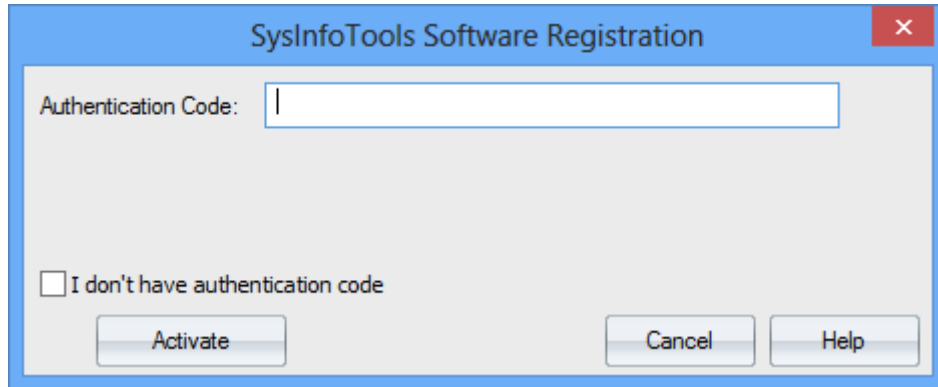
Once the payment is received, an order number is sent to you via e-mail.

How to Activate

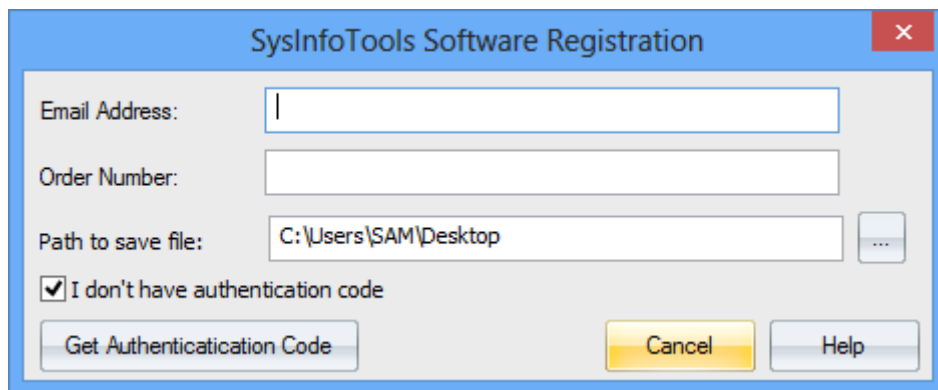
SysInfoTools EML Converter

As you purchase the software, an Order Number is generated and provided to you. This order number has to be entered in the Registration window of the full version of EML Converter tool.

- Open **SysInfoTools EML Converter** software in your system, software registration dialog will pop-up on your screen to enter software authentication key.



- Click the "I don't have Authentication Code" check box, following fields will be displayed in the registration dialog:



Email Address: In this field, you need to enter your email address, which you have used to register **EML Converter** software.

Order Number: In this field, you need to enter the Order Number which has been provided to you at the time of purchasing the software.

Path to save the file: Select the path where you want to save the .info file which is generated after clicking on "**Get Authentication Code**", by default .info file will be saved on the desktop of your system.

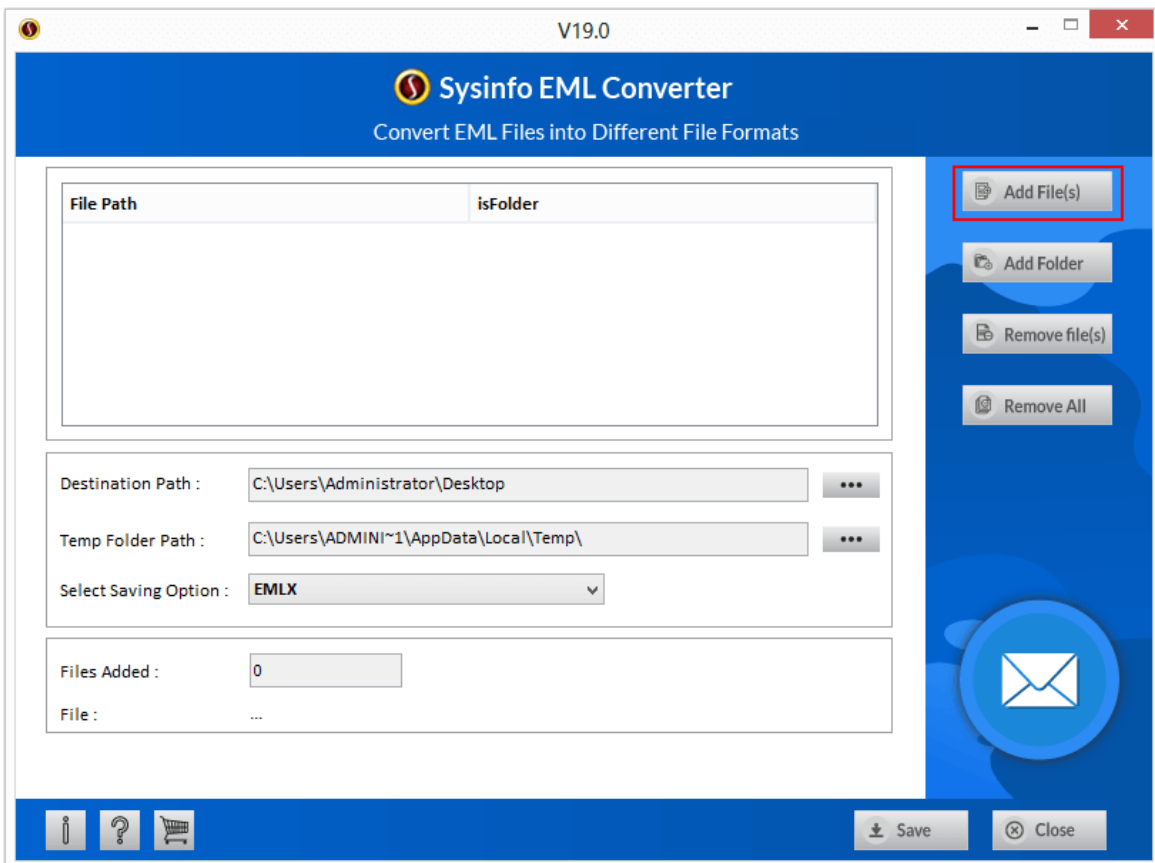
Send this **.info file** generated by the software at sales@sysinfotools.com, after getting .info file sales department will send you software activation key within a couple of minutes.

For any software related queries email at: support@sysinfotools.com

5. Using SysInfoTools EML Converter

- [Understanding the User Interface](#)(See 5.1)
- [Button Used](#)(See 5.2)
- [How to Use the PST Split software?](#)(See 5.3)

Understanding the User Interface



Button Used

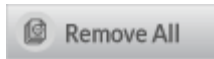
Buttons	Button Name	Description
---------	-------------	-------------

	Add Files:	You can use this following button to add different EML files that you want to convert.
--	-------------------	--

	Add folder:	With the help of Add Folder button you can easily add different folders containing EML files.
--	--------------------	---

	Remove Files:	The Remove Files button help users to remove specific EML files from the selected list.
--	----------------------	---

SysInfoTools EML Converter



Remove all: If you want to remove all your EML files which you have selected earlier then you will have to click on the Remove All button.



Save: The Save button has been designed to help users to save the converted files in their system.

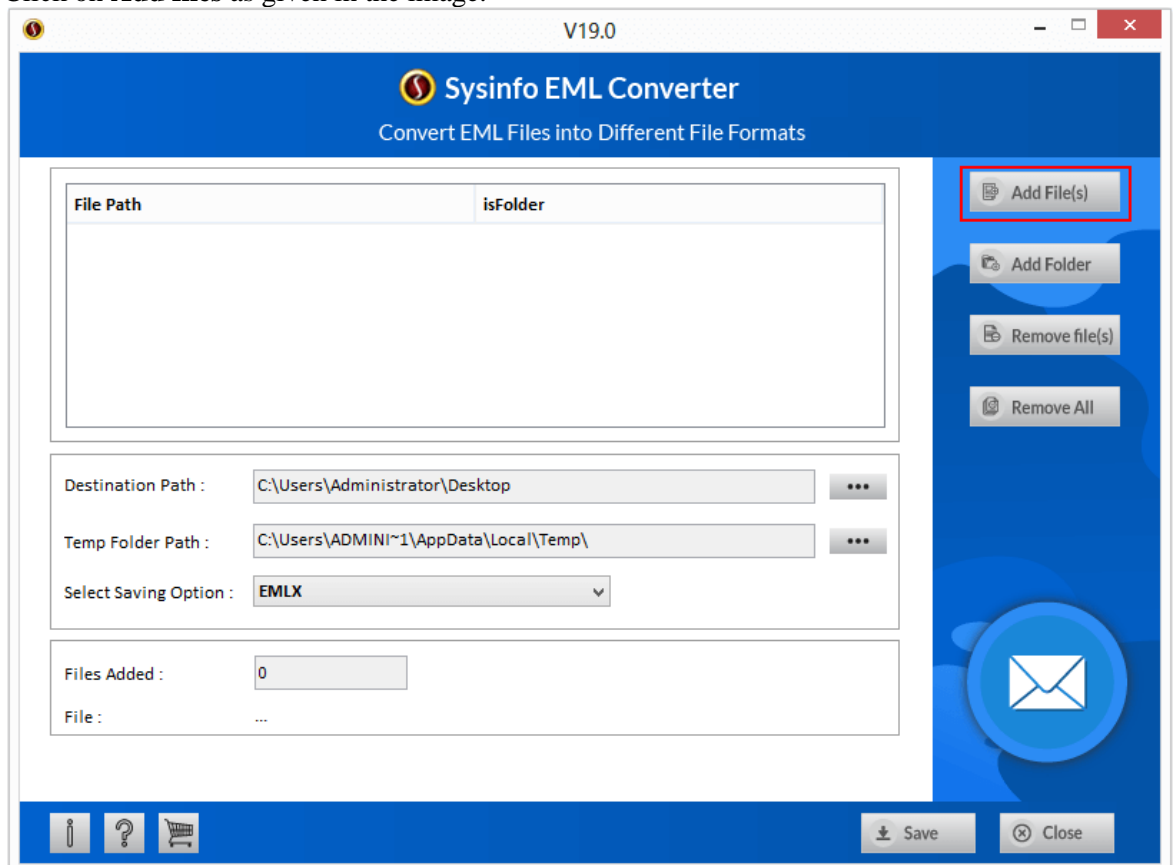


Close: To end give or running process click on Close.

How to use EML Converter Tool

1 . Add Files

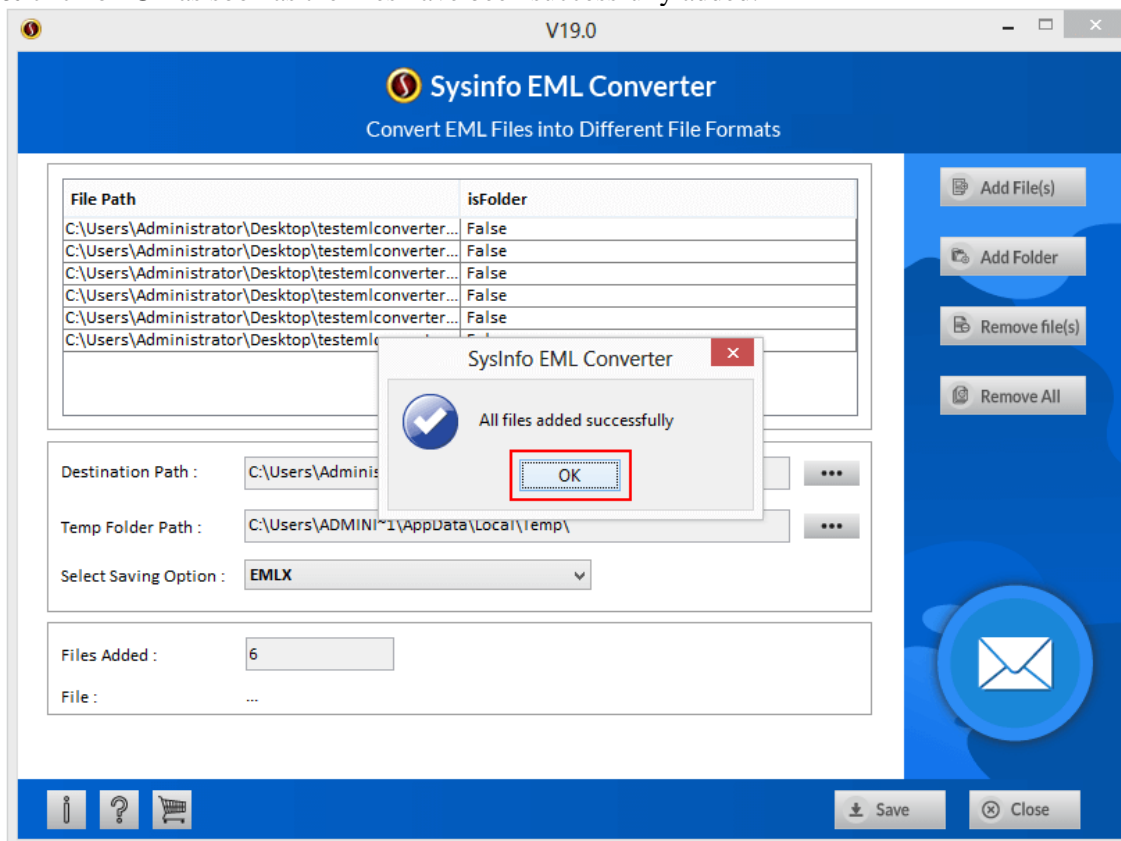
- Click on **Add files** as given in the image.



- Select the **EML file(s)** that you want to convert.

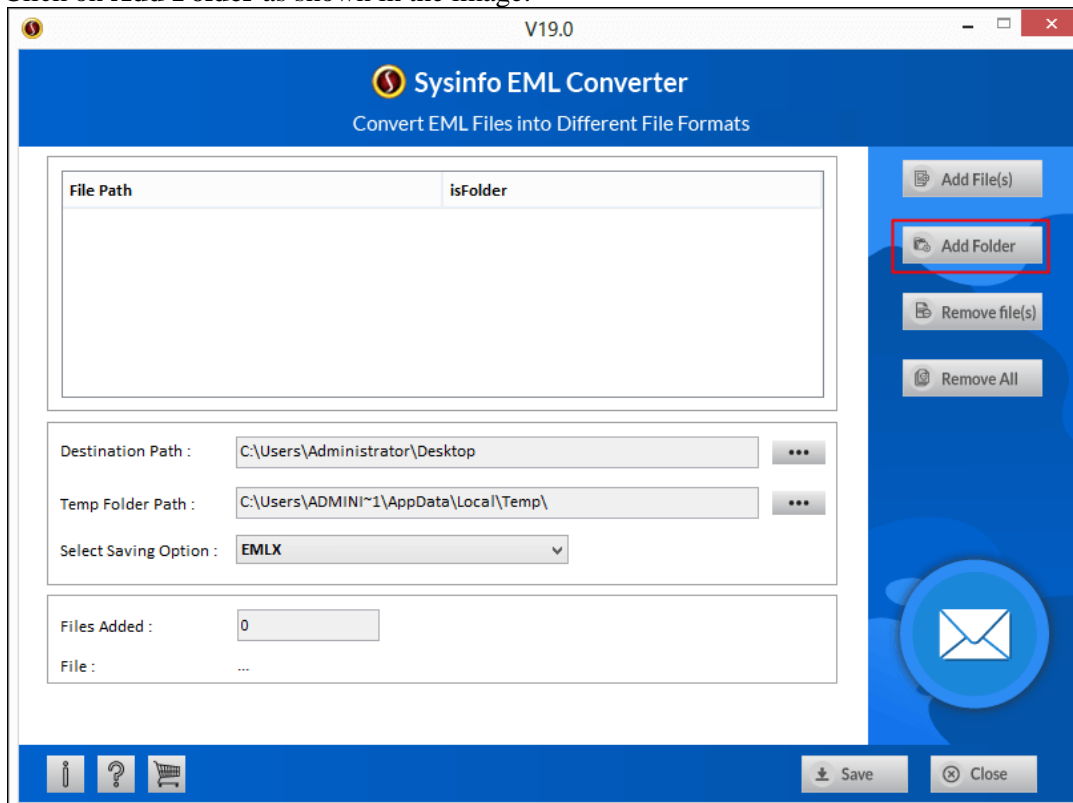
SysInfoTools EML Converter

- & click on **Ok** as soon as the files have been successfully added.



2. Add Folders

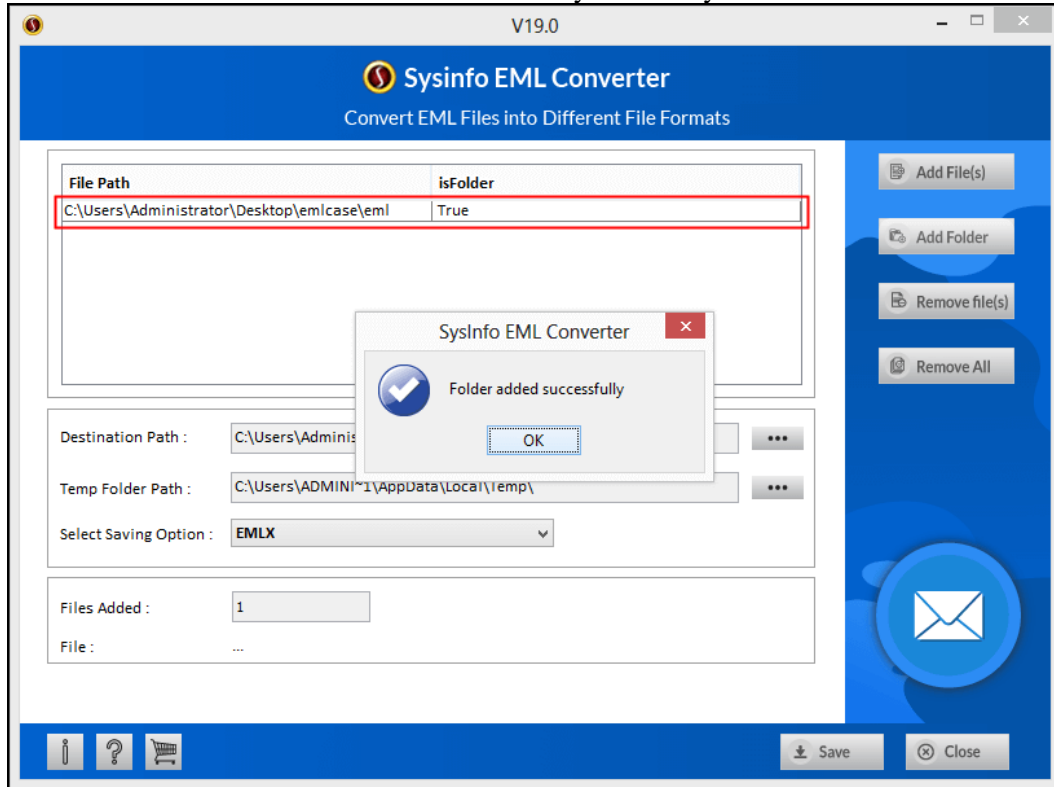
- Click on **Add Folder** as shown in the image.



- Select the Folder(s) containing EML files from your system.

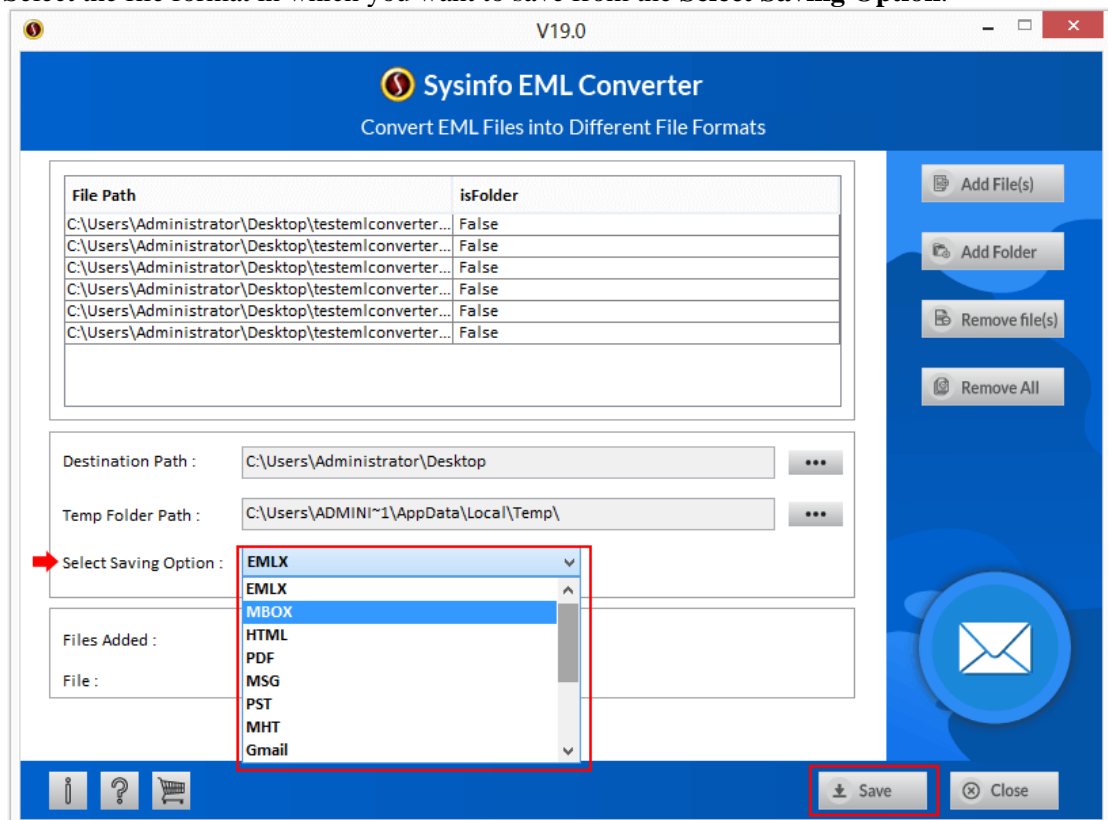
SysInfoTools EML Converter

- Click on **Ok** after the files have been successfully added in your software.



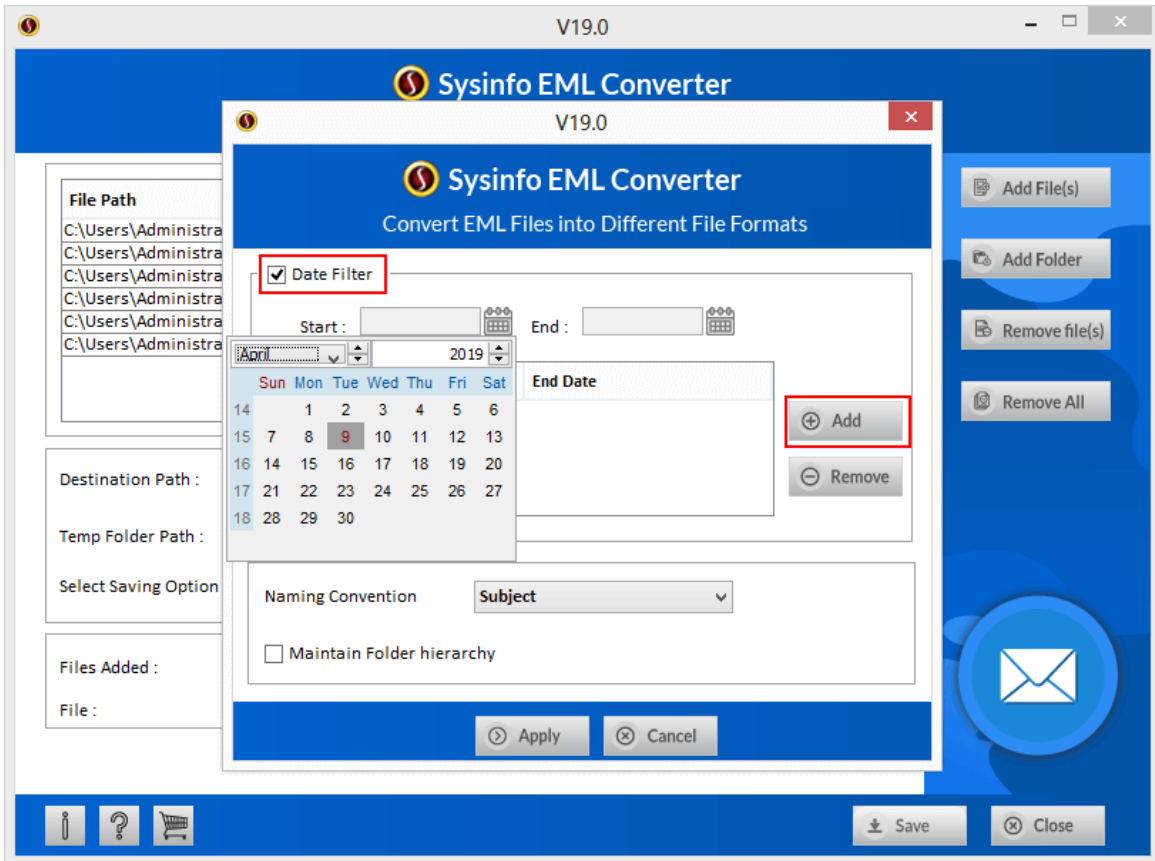
3. Converting & Saving the Files

- Select the file format in which you want to save from the **Select Saving Option**.



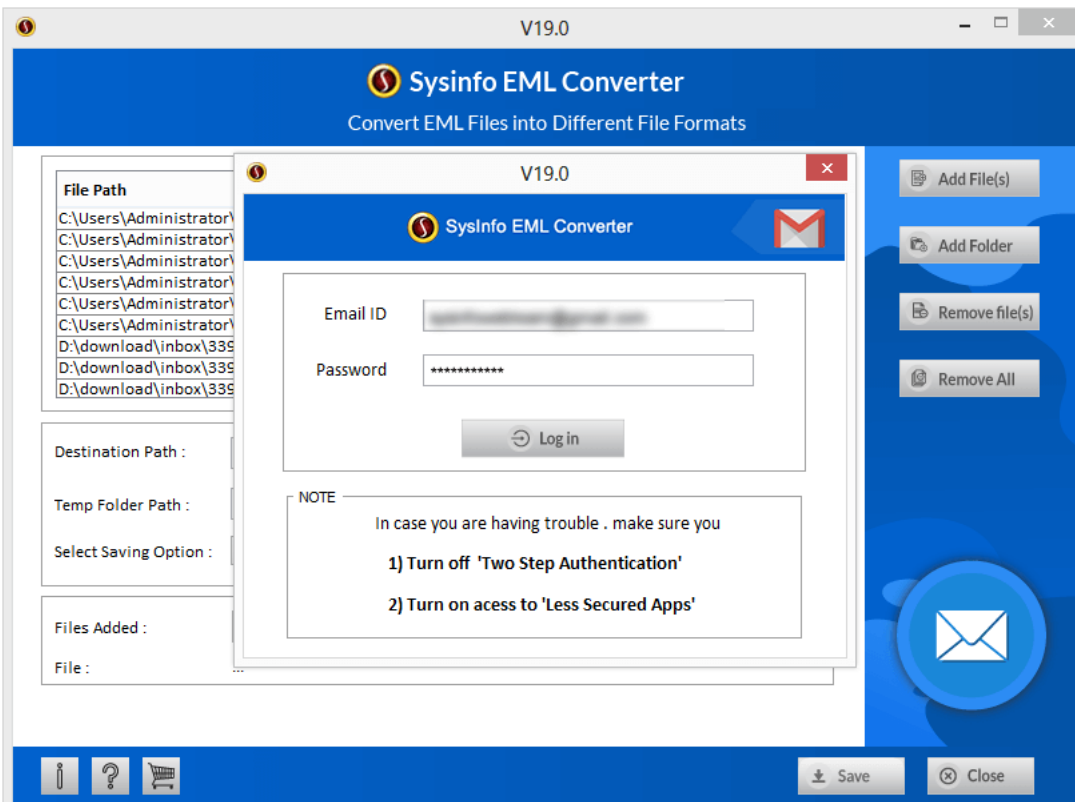
- Select the location where you want to save the files.

5.4 Filter Dates Option



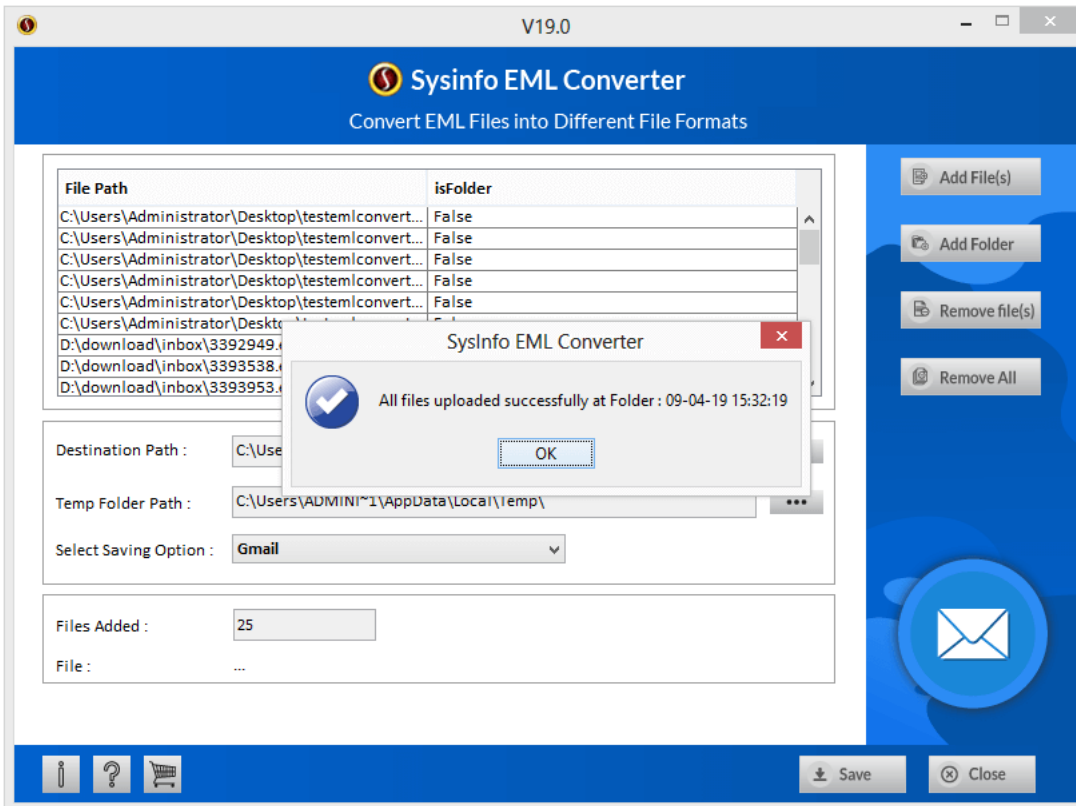
- If you want can select the dates as well to save the files from Date Filter.
- Or click on the **Naming Convention** to select the format in which you want to name the converted files.
- & click on **Apply**.

5. How to Log In (For Outlook, Gmail, Yahoo & IMAP)



- If you are planning to import the files in either of the mail clients then you will have to Sign in with your id & password.
- So type in the Email id and the Password that you use and click on **Log in**.

6. Finishing the Conversion



- Click on **Ok** as soon as the software completes and saving process.
- After closing the software, you can even view the files that have been converted.

6. Uninstall the Software

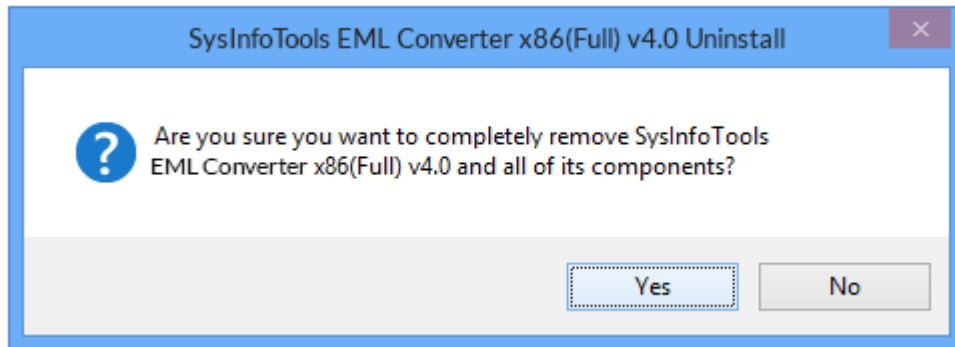
To uninstall the software from your system, you can use any of the two methods described below:

1. Uninstall from **ControlPanel**
2. Uninstall from **Windows Start menu**

Uninstall from Control Panel:

To uninstall **SysInfoTools EML Converter** tool from Control Panel, follow the steps shown below:

- Click the **Start Menu > Control Panel** and then double click the **Add or Remove Programs** icon.
- Select **SysInfoTools EML Converter** and click **Remove**.
- A warning message before un-installing the software will be displayed on the screen.

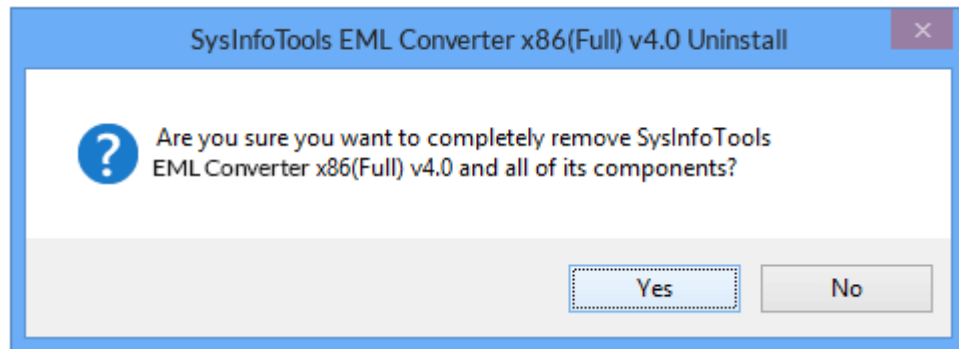


- Click 'Yes' to uninstall the software completely from your system.

Uninstall from Windows Start menu:

To uninstall SysInfoTools EML Converter file from Windows Start menu, follow the steps shown below:

- Click the **Start** button from the Windows menu.
- Click **All Programs > SysInfoTools EML Converter > Uninstall SysInfoTools EML Converter**.
- A warning message before un-installing will be displayed on the screen.



- Click 'Yes' to uninstall the software completely from your system.

7. Legal Notice

[Copyright](#)(See 7.1)

- [Disclaimer](#)(See 7.2)
- [Trademarks](#)(See 7.3)
- [License Agreement](#)(See 7.4)

Copyright

SysInfoTools EML Converter software, accompanied user manual and documentation are copyright of SysInfoTools Data Recovery, with all rights reserved. Under the copyright laws, this user manual cannot be reproduced in any form without the Prior written permission of SysInfoTools. No Patent Liability is assumed, however, with respect to the use of the Information contained herein.

Disclaimer

The Information contained in this manual, including but not limited to any product specifications, is subject to change without notice. SysInfoTools Data Recovery Provides no warranty with regard to this manual or any other information contained herein and here by expressly disclaims any implied warranties of merchantability or fitness for any particular purpose with regard to any of the foregoing SysInfoTools Data Recovery assumes no liability for any damages incurred directly or indirectly from any technical or typographical errors or omissions contained herein or for discrepancies between the product

and the manual. In no event shall SysInfoTools Data Recovery, be liable for any incidental, consequential special, or exemplary damages, whether based on tort, contract or otherwise, arising out of or in connection with this manual or any other information contained herein or the use there of.

Trademarks

SysInfoTools EML Converter Tool is a registered trademark of SysInfoTools Data Recovery.

Windows 2000, 2003, XP and Windows Vista are registered trademarks of Microsoft Corporation.

All other brands and product names are trademarks or registered trademarks of their respective companies.

License Agreement

SysInfoTools EML Converter Copyright by SysInfoTools Data Recovery.

[Your Agreement to this License](#)

You should carefully read the following terms and conditions before using, installing or distributing this software, unless you have a different license agreement signed by SysInfoTools Data Recovery.

If you do not agree to all of the terms and conditions of this License, then: do not copy, install, distribute or use any copy of SysInfoTools EML Converter with which this License is included, you may return the complete package unused without requesting an activation key, within 30 days after purchase, for a full refund of your payment.

The terms and conditions of this License describe the permitted use and users of each Licensed Copy of SysInfoTools EML Converter. For purposes of this License, if you have a valid single-copy license, you have the right to use a single Licensed Copy of SysInfoTools EML Converter; if you or your organization has a valid multi-user license, then you or your organization have/has the right to use up to a number of Licensed Copies of SysInfoTools EML Converter equal to the number of copies indicated in the documents issued by SysInfoTools when granting the license.

[Scope of the License](#)

Each Licensed Copy of SysInfoTools EML Converter may either be used by a single person or used non-simultaneously by multiple people who use the software personally installed on a single workstation. This is not a concurrent user license. All rights of any kind in SysInfoTools EML Converter, which are not expressly granted in this License, are entirely and exclusively reserved to and by SysInfoTools. You may not rent, lease, modify, translate, reverse engineer, decompile, disassemble, or create derivative works based on, SysInfoTools EML Converter, nor permit anyone else to do so. You may not make access to SysInfoTools EML Converter available to others in connection with a service bureau, application service provider, or similar business, nor permit anyone else to do so.

[Warranty Disclaimers and Liability Limitations](#)

SysInfoTools EML Converter, and any and all accompanying software, data and materials, are distributed and provided AS-IS and with no warranties of any kind, whether expressed or implied. In particular, there is no warranty for the quality of data recovered. You acknowledge that good data processing procedure dictates that any program, including SysInfoTools EML Converter, must be thoroughly tested with non-critical data before there is any reliance on it, and you hereby assume the entire risk of all use of the copies of SysInfoTools EML Converter covered by this License. This disclaimer of warranty constitutes an essential part of this License.

In addition, in no event does SysInfoTools authorize you or anyone else to use SysInfoTools EML Converter in applications or systems where SysInfoTools EML Converter failure to perform can reasonably be expected to result in a significant physical injury, or in loss of life. Any such use is entirely at your own risk, and you agree to hold SysInfoTools harmless from all claims or losses relating to such unauthorized use. You agree to hold SysInfoTools Data Recovery harmless from any and all claims or losses relating to such unauthorized use.

8. Technical Support

We provide 24/7 online support to solve customer's queries. We have highly skilled and expert support team, who makes use of modernized communication devices, thereby achieving maximum efficiency and an exceptional response time.

9. About SysInfoTools

Since several years, SysInfoTools has evolved as one of the trusted names in the field of Data Recovery of the different types of files. The main aim of our organization is to provide the best possible solution to our customers so that our customers can recover their data and relief them from the frustration of data loss. We aim at providing values to our customers and try to satisfy them in every possible way. Customer satisfaction is prime reward for our organization.

SysInfoTools provides a wide range of software for different types of corrupt files recovery and repair for corrupt zip files, MS BKF files, Open Office files (Base files, Impress files, Draw files, Calc files, Math files and Writer files), MS Office 2007 files (MS Word files, MS PowerPoint files and MS Excel files). SysInfoTools also provides software for corrupt PST files of MS Outlook and DBX files of Outlook Express. In addition, we have more recovery software which are available for crashed hard disk recovery and repair like software for FAT recovery and NTFS recovery. In future, we are going to expand our operations to offer more software for different types of corrupt files, Database, Email migration, Desktop utilities, Network management and many more which will help our customers to recover their valuable data.

The hard drives data recovery software provided by our organization ensures safe and accurate data recovery from the hard drive. It does not modify the existing content of the hard drive and make the fresh copy of the recovered data. Hard drives data recovery software are useful in situation when there is an accidental deletion of files, which are deleted due to virus attacks, disk formatting and software malfunctioning.

SysInfoTools EML Converter

You can buy our products directly from SysInfoTools website. We provide software both by online mode and via shipment. The shipment is made within the committed time frame and at reasonable rates. We provide 24x7 customer support, our dedicated support team assists our customer by providing them information before and after the purchase of our product. We also provide the live working videos and free demo of our products at our SysInfoTools site so that the customer can see and analyze the software before purchasing it.

Visit SysInfoTools site at: www.sysinfotools.com